



Custodian-Controlled Data Repository (CCDR)

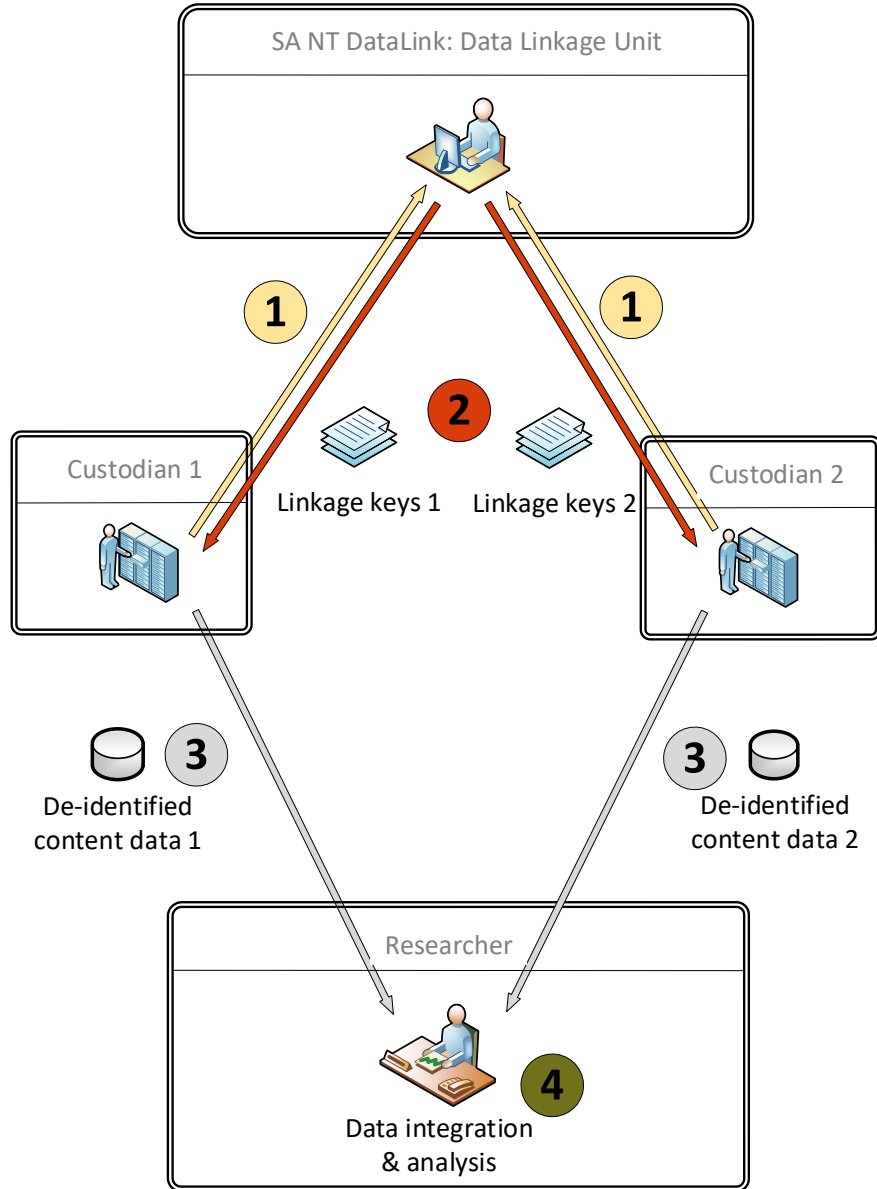
Supporting the timely, easy and cost effective access to high-quality linked data

March 2018



The Australian Government provides financial support to SA NT DataLink through the National Collaborative Research Infrastructure Strategy (NCRIS).

Existing data delivery model



1. Custodians provide personal identifiers

2. Data linkage unit produces linkage keys

3. Custodians de-identify data

4. Researcher undertakes integration and analysis

Why worry about a Custodian-Controlled Data Repository (CCDR)?



Problem:

Reduced Data Custodian resources with increased work loads preventing quick data delivery



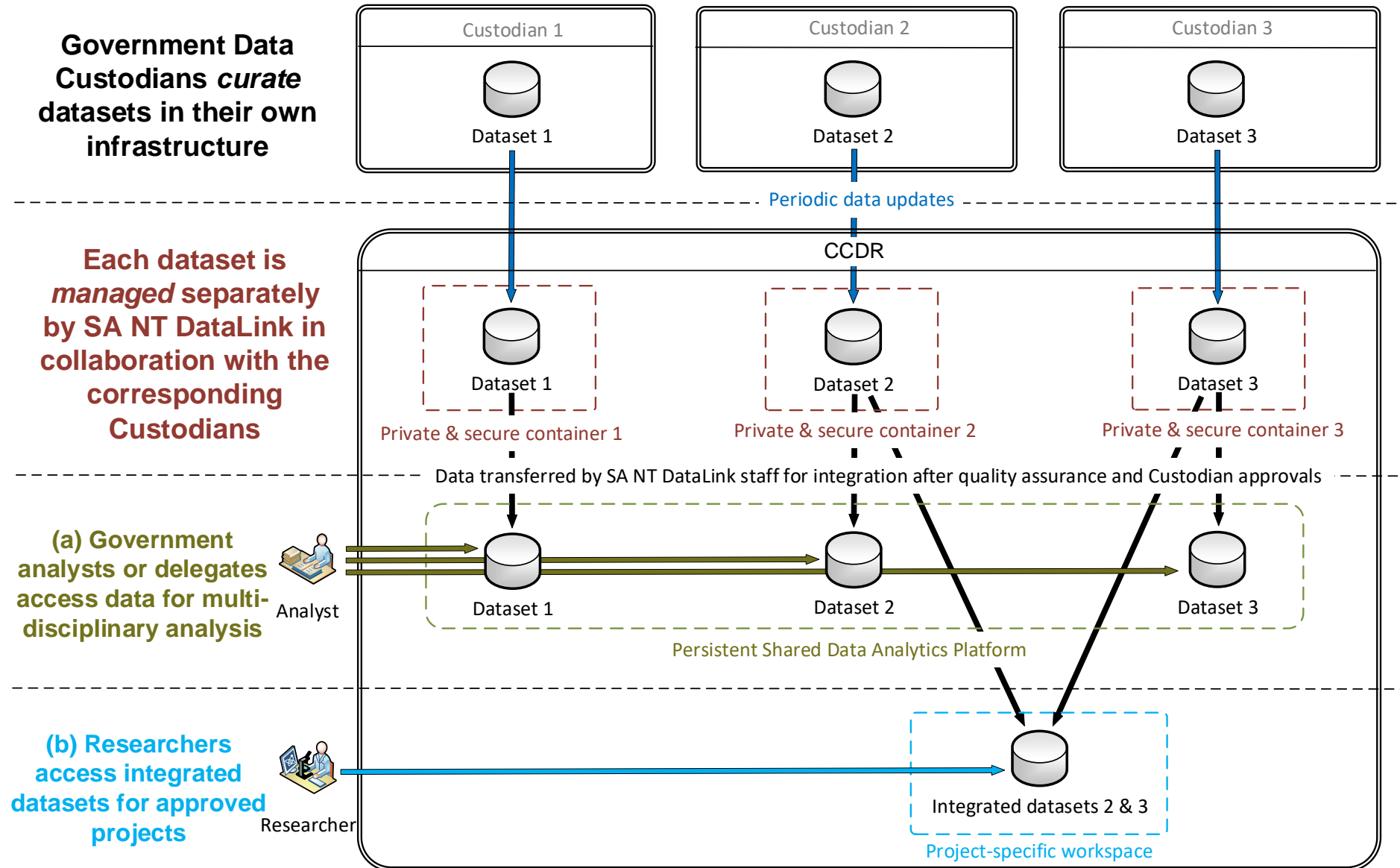
Solution:

Improved timely delivery and access to approved de-identified data via CCDR

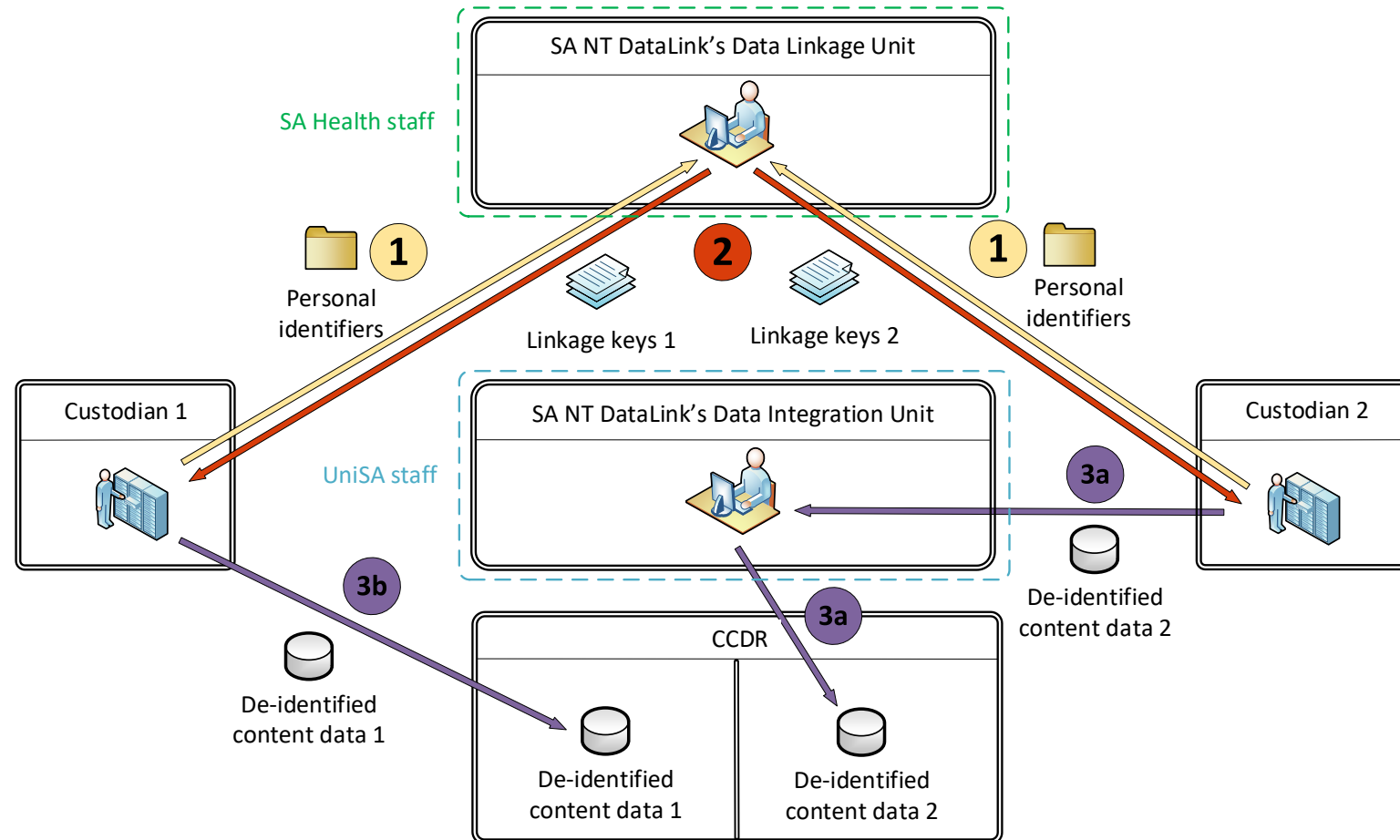
Building on existing local & national infrastructure

- **‘Unchanged’ data / research governance:**
 - Custodians remain data curators
 - Researchers only receive de-identified project data with custodian and ethics approvals
- **Centralised capacity:** De-identified data jointly managed with SA NT DataLink’s Data Integration Unit staff
- **Centralised data:** De-identified data safely stored in Australian Government-approved infrastructure
- **Controlled access:** All access to data in repository controlled by permissions
- **Opt-in:** Use of new model by custodians is voluntary
- **Process quality:** Utilising consistent Australian Government data integration principles to provide high quality and safe data

CCDR 'High Level' Model



CCDR Data Provision Workflow



1. Custodians provide personal identifiers

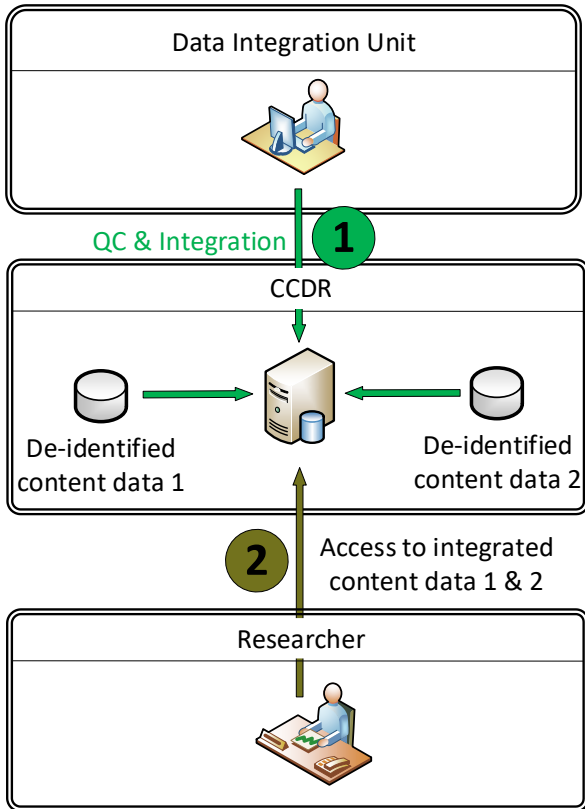
2. Data Linkage Unit produces linkage keys

3. Custodians provide de-identified data

a. into CCDR via Data Integration Unit

b. directly into CCDR

CCDR Data Integration Workflow



1. Data Integration Unit merges datasets

2. Researcher accesses integrated project data in CCDR¹

¹Where agreed with a custodian, researchers may also receive de-identified data directly from the custodian

Benefits

✓ **Less complex:**

- Custodians: less frequent provision of de-identified data
- Researchers: less custodians to liaise with for data delivery

✓ **More timely:**

- Researchers: less delays through support of data delivery by dedicated SA NT DataLink staff

✓ **More resource-efficient:**

- Custodians: less staff time required for data delivery

✓ **More validated**

- Custodians & researchers: additional data quality review

**Please contact us if you have any questions
or require more detailed information
on workflows and business processes
around the Custodian-Controlled Data Repository**

Matthias Schneider
SA NT DataLink, Principal Data Analyst
matthias.schneider@unisa.edu.au
+61 (8) 8302 1706
www.santdatalink.org.au



The Australian Government provides financial support to SA NT DataLink through the National Collaborative Research Infrastructure Strategy (NCRIS).